



Specifications

Material

- » Microsurfaced impact acrylic

Finish

- » Matte non-glare
- » Gloss ■
- » Brushed metal*
- » Patterned*

Sheet Size

- » 24 1/8" x 49" (613 x 1245mm)
- » Port Wine/Gold (LM922-677) usable area: 23 1/2" x 49" (597 x 1245mm)

Thickness 2-ply

- » 1/32" (0.8mm) Use LM912 as first digits in item code.
- » 1/16" (1.6mm) Use LM922 as first digits in item code.
- » 1/8" (3.2mm) Use LM942 as first digits in item code. (Gauges are approximate.)

Usage

- » Interior signage*
- » Exterior signage
- » Personal Identification
- » Trophies and awards

Engraving Method

- » Laser
- » Rotating carbide

Engraving Depth

- » .003" (.08mm)

Fabrication

- » Scores
- » Saws
- » Drills
- » Shears
- » Laser vector cuts
- » Screen prints
- » Heat bendable
- » Permits fine detail engraving
- » Bevels
- » Hot stamps
- » Bonds
- » UV stable*
- » Outdoor weatherable*

Visit rowmark.com for Rowmark's complete line of products for rotary engraving, laser engraving and sublimation.

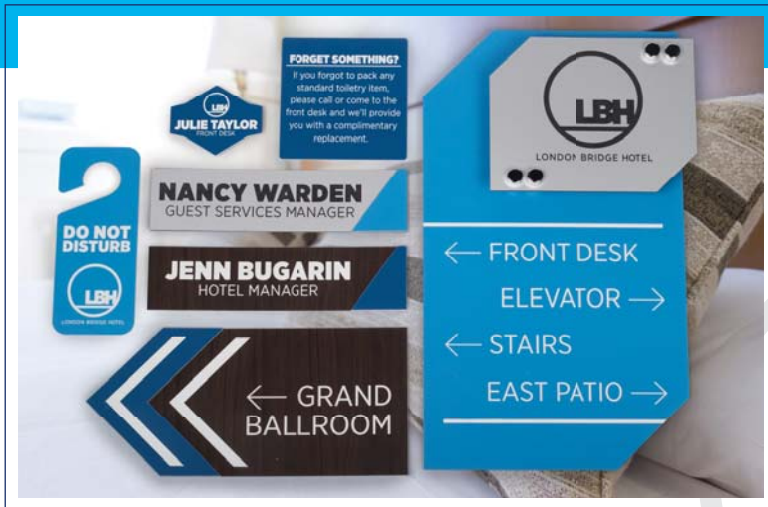
Find answers to all your questions in the Technical Help section. Be sure to check out support tools under the Sales Tools and Downloads sections.

*Some LaserMax® foils are not recommended for applications in which UV stability is a requirement. NoMark® Plus finish is available on all LaserMax® metals by adding "0+" to the end of the item code.

◆ Not recommended for harsh or high humidity indoor or outdoor applications.

To request a sample or promotional literature, please call 1-877-ROWMARK (419-429-3160) or email samples@rowmark.com. For technical assistance, call 1-877-ROWMARK (419-429-3160), visit www.rowmark.com or email inquiries@rowmark.com.

Can't find exactly what you're looking for? We can build any combination of cap and core within the LaserMax® product line. Also, be sure to check out the Varsity Collection page at www.rowmark.com. Contact your authorized Rowmark distributor or speak with one of our customer service specialists at 1-800-243-3339 (419-425-2407).



LaserMax® Sign Kit

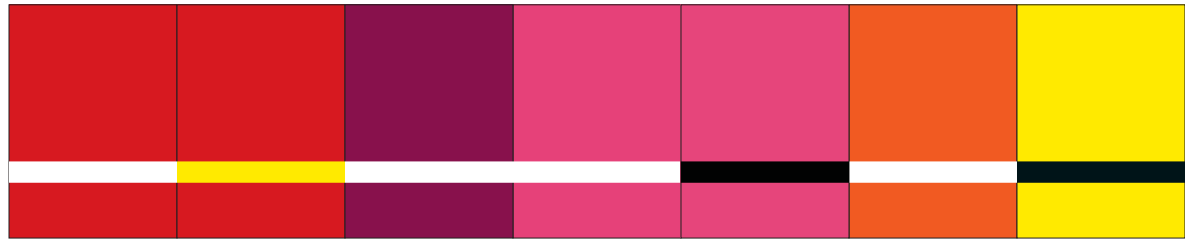
Fabricate the LaserMax® Sign Kit by downloading the file found under the downloads section of our website at www.rowmark.com.



rowmark.com / 1.877 ROWMARK / samples@rowmark.com



Answering the needs of today's laser engraver, LaserMax[®] features include an enhanced heat tolerance and UV stable color foils. LaserMax is engineered for cleaner and faster engraving.



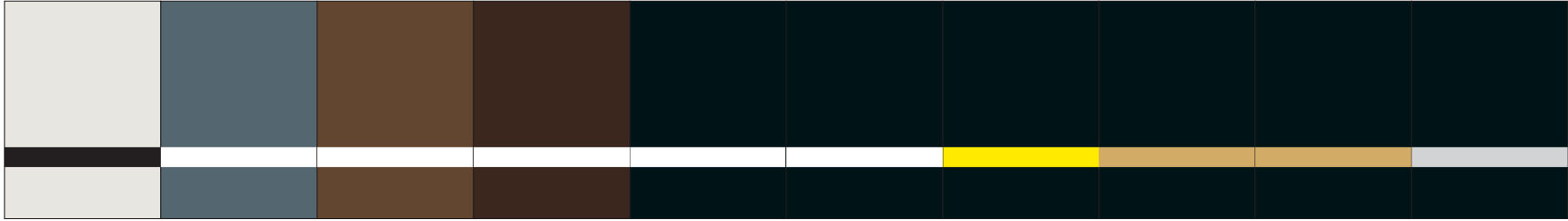
LM9X2-602 Crimson/ White	LM922-607 Crimson/ Yellow	LM922-622 Claret/ White	LM922-662 Ribbon Pink/ White	LM922-664 Ribbon Pink/ Black	LM922-612 Tangerine/ White	LM9X2-704 Canary/ Black
---------------------------------------	--	--------------------------------------	---	---	---	--------------------------------------



LM9X2-932 Kelley Green/ White	LM922-972 Celadon Green/ White	LM9X2-912 Evergreen/ White	LM9X2-512 Sky Blue/ White	LM922-517 Sky Blue/ Yellow	LM922-502 Sapphire/ White	LM922-562 Light Blue/ White	LM922-552 Patriot Blue/ White	LM922-382 China Blue/ White	LM922-582 Purple/ White
--	---	---	--	---	--	--	--	--	--------------------------------------



LM922-206 White/ Crimson	LM922-226 White/ Burgundy	LM922-205 White/ Sky Blue	LM922-209 White/ Bright Green	LM922-269 White/ Pine Green	LM9X2-204 White/ Black	LM922-228 Ivory/ Dark Brown	LM922-854 Almond/ Black	LM922-326 Light Grey/ Burgundy	LM922-325 Light Grey/ Marine Blue
---------------------------------------	--	--	--	--	-------------------------------------	--	--------------------------------------	---	--



LM922-324 Light Grey/ Black	LM922-312 Smoke Grey/ White	LM922-822 Med. Brown/ White	LM922-842 Dark Brown/ White	LM9X2-402 Black/ White	LM922-422 Gloss Black/ White	LM922-407 Black/ Yellow	LM922-417 Black/ Gold	LM922-427 Gloss Black/ Gold	LM922-413 Black/ Silver
--	--	--	--	-------------------------------------	---	--------------------------------------	------------------------------------	--	--------------------------------------

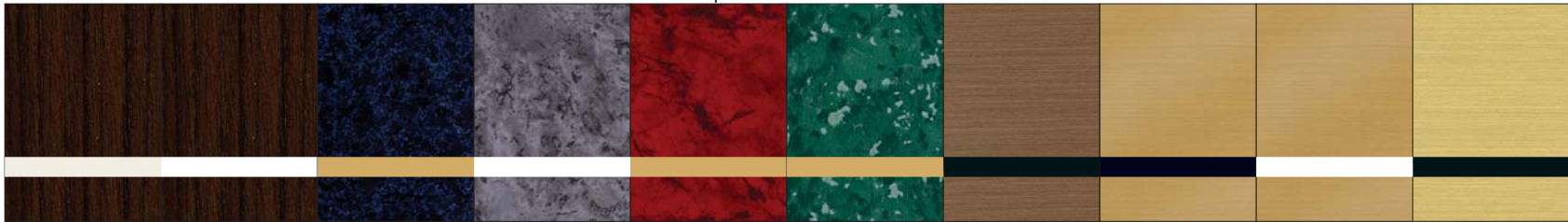




Answering the needs of today's laser engraver, LaserMax® features include an enhanced heat tolerance and UV stable color foils. LaserMax is engineered for cleaner and faster engraving.



LM922-188 Cashew/ Dark Brown	LM922-138 Cashew/ Taupe	LM922-134 Cashew/ Black	LM922-122 Toffee/ Ash	LM922-112 Toffee/ White	LM922-022 Cinnamon Stick/ Ash	LM922-222 Cinnamon Stick/ White
---	--------------------------------------	--------------------------------------	------------------------------------	--------------------------------------	--	--



LM922-082 Kona/ Ash	LM922-012 Kona/ White	LM922-577 ■ Celestial Blue/ Gold	LM922-362 ■ Harbor Grey/ White	LM922-677* ■ Port Wine/ Gold	LM922-937* ■ Verde/ Gold	LM922-884* Deep Bronze/ Black	LM922-874* Br. Bronze/ Black	LM922-872* Br. Bronze/ White	LM9X2-734* Br. Gold/ Black
----------------------------------	------------------------------------	---	---	---	---------------------------------------	--	---	---	---



LM9X2-754* ◆ European Gold/Black	LM9X2-714* Smooth Gold/ Black	LM9X2-354* Br. Alum./ Black	LM9X2-334* Br. Silver/ Black	LM9X2-344* Smooth Silver/ Black	LM922-982 Digicam Std. Issue/White	LM922-922 Digicam Green/ White	LM922-844 Digicam Desert Storm/Black	LM922-694 Digicam Pink/ Black	LM922-532 Digicam Air Force Blue/White
---	--	--	---	--	---	---	---	--	---



LM922-592 Digicam Navy/ White	LM922-372 Digicam Special Ops/White
--	--

**Some LaserMax® foils are not recommended for applications in which UV stability is a requirement.*

