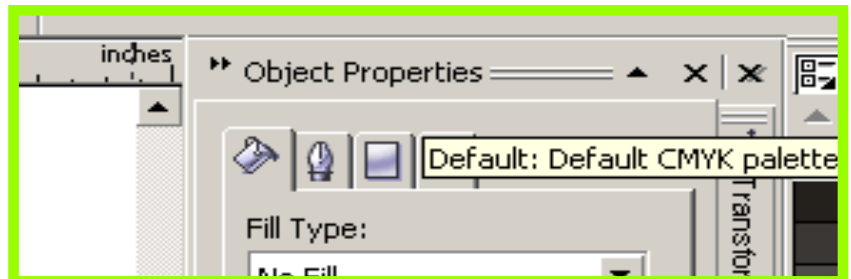
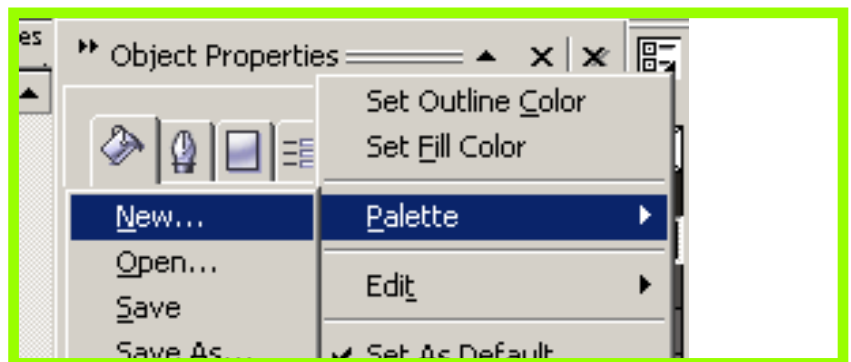


Creating Custom Color Palettes in Corel Draw

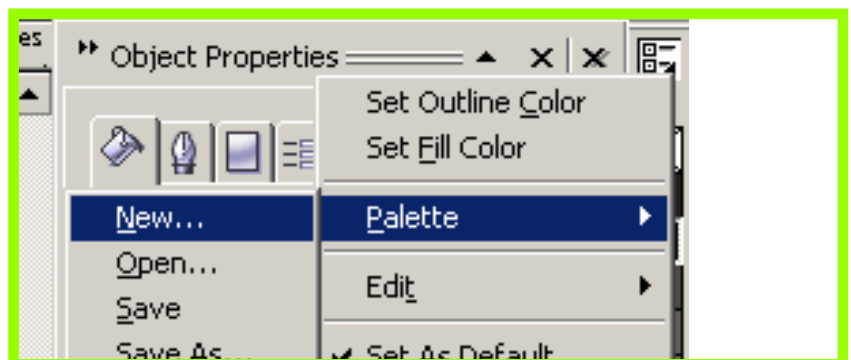
1. Click on the color palette menu



2. Scroll over Palette and select New...

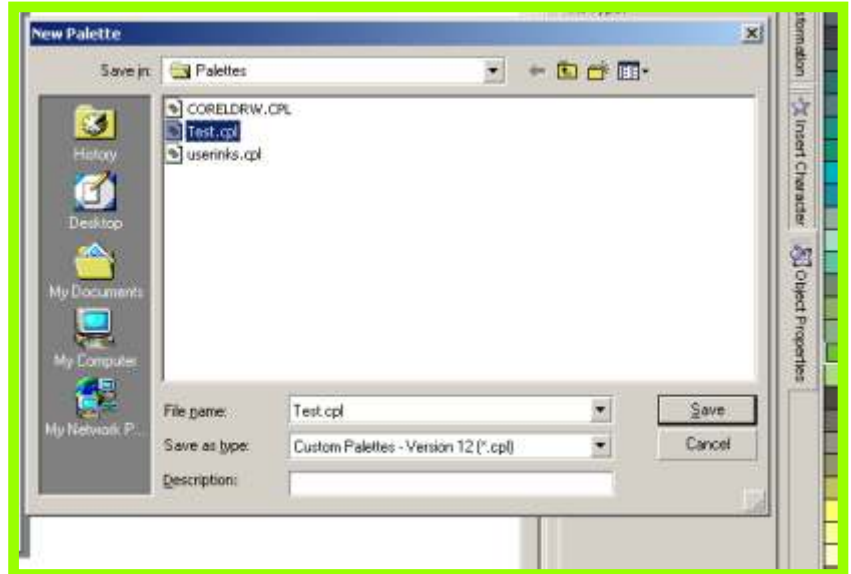


3. Name your palette and click save.



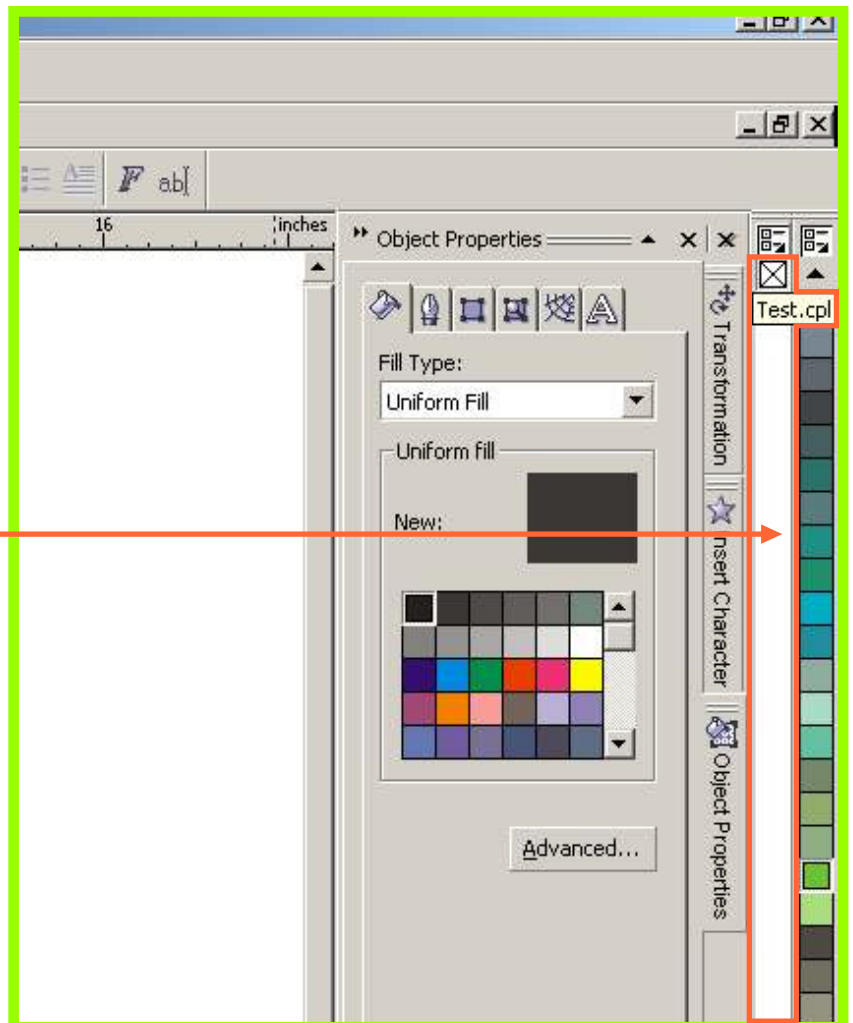
Creating Custom Color Palettes in Corel Draw

4. Saved Color Palette



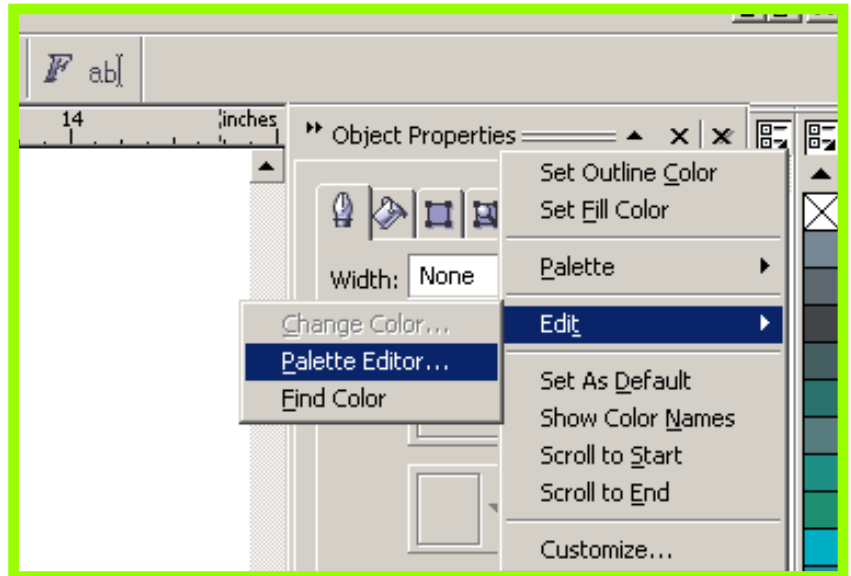
5. New Color Palette will automatically open beside the default Color Palette.

Newly created custom palette

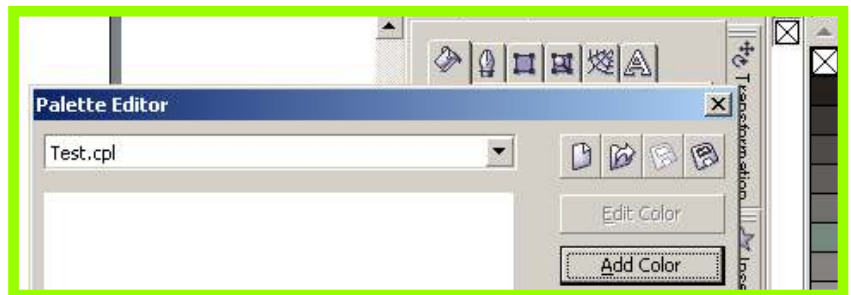


Adding a Custom Color to your Color Palette

6. Click on the Color Palette menu above your newly created Color Palette, scroll over Edit and select Palette Editor.



6. Click Add color on the right side of the Palette Editor window.



7. Enter the CMYK value of the color you would like to add and then click "Add to Palette" next click close.



Adding a Custom Color to your Color Palette

8. Select the new color you have created in the Palette Editor window, delete the CMYK value out of the Name field and enter a new name for the color. Click OK.



8. The new color is now available in the custom color palette.

